

MailIT

ExpandIT MailIT allows you to send e-mails from Microsoft Dynamics NAV that look the way you want them to. You can use MailIT for specific, individual e-mails such as sending a customer invoice, or for mass e-mailing such as newsletters. When used in conjunction with the ExpandIT Launch Utility, it can be used to automate recurring e-mails.



MailIT is a COM object and it can send e-mails through an SMTP mail server or an e-mail client such as Microsoft Outlook. Depending on the configuration, the component will contact the mail server directly and deliver the mails you create or it will interact with your existing e-mail client. A PDF driver is available as part of the product, and is used when sending invoices or other reports as .pdf attachments.



Some Use Case Scenarios:

- Order confirmation
- E-mailing Invoices
- Purchase Orders
- Sales Statistics
- Newsletters
- Periodic Reports to Management.

Product Functionality / Key Features:

- HTML e-mails (logos and pictures)
- PDF driver included
- Outlook for individual e-mails / SMTP for mass mailings
- COM-object used by NAV code
- Currently 74 documented methods
- No NAV prerequisites
- Use NAV's CRM and MailIT to send mass e-mails through SMTP and bypass Outlook. This saves a significant amount of time during mass mailing
- Any HTML editor can be used
- Can also be used in other ERP systems

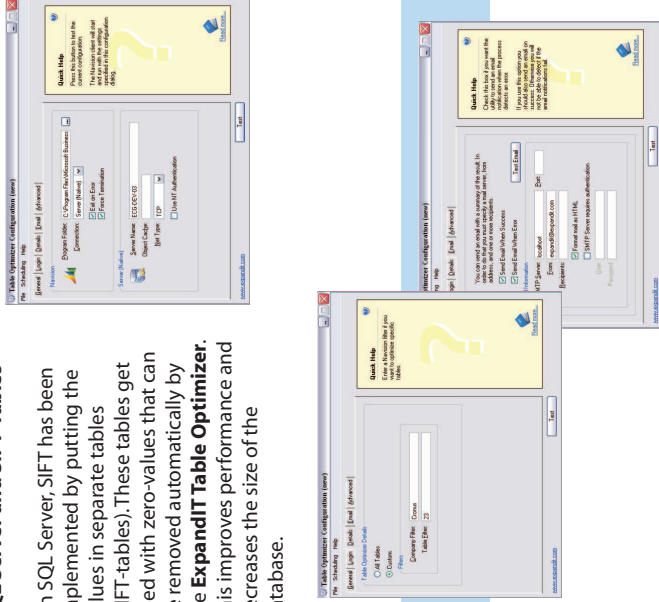
Table Optimizer

The Microsoft Dynamics NAV database is organized in a tree structure, which maintains an ordered set of data and allows efficient operations to find, delete, insert and browse data.

The tree grows as data is inserted but it does not shrink automatically when data is deleted. The NAV optimize feature removes the empty branches of the tree like gardeners remove dead branches from real trees.

SQL Server and SIFT-Tables

On SQL Server, SIFT has been implemented by putting the values in separate tables (SIFT-tables). These tables get filled with zero-values that can be removed automatically by the **ExpandIT Table Optimizer**. This improves performance and decreases the size of the database.



Product Functionality / Key Features:

- Automated and scheduled table optimization
- Status report via e-mail or SMS
- Intelligent error handling
- Logging
- Multiple configurations
- Passwords are encrypted

Copyright 2008, ExpandIT Solutions US, Inc. All rights reserved.

Microsoft Dynamics NAV, Navision, and Microsoft Windows are registered trademarks of Microsoft Corporation.

EXPANDIT solutions

ExpandIT Worldwide
www.ExpandIT.com
sales@ExpandIT.com

Denmark
www.ExpandIT.dk
kth@ExpandIT.dk

France, Belgium, Luxembourg
www.ExpandIT.fr
sales@ExpandIT.fr

Germany, Austria, Switzerland
www.ExpandIT.de
sales-dache@ExpandIT.com

North America
www.ExpandIT.us
sales@ExpandIT.us

Spain, Portugal, Latin America
www.ExpandIT.es
sales-latn@ExpandIT.com

Sweden
www.ExpandIT.se
sales-se@ExpandIT.com

Utilities

ExpandIT Utilities are widely recognized as the standard for Microsoft Dynamics NAV. Use them to automate and enhance your Navision experience.

Backup Utility

Client Control

Client Manager

Launch Utility

MailIT

Table Optimizer

Business Without Limits

Backup Utility

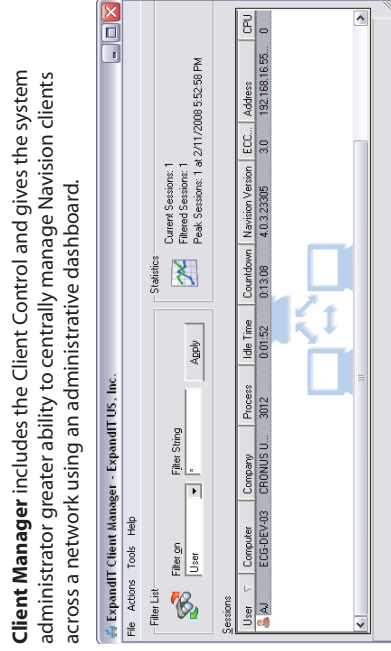
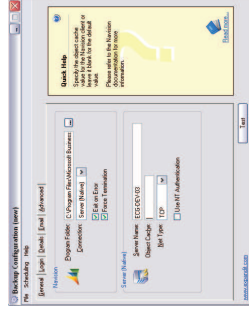
ExpandIT Backup Utility enables scheduled, automated, consistent and reliable backup and restore of Microsoft Dynamics NAV from version 1.1 to version 5.0 using the built-in Navision backup feature.

When using standard Navision backup functionality by itself, certain problems are encountered:

Backing up: Navision's built-in backup function cannot perform a scheduled, automated or unattended database backup.

Restoring: Requires setting up a new database. Depending on amount of data and number of keys, restores can take from 5 minutes to several hours.

Other methods such as File Backup, Stop / Start server, HotCopy or SQL Server have one or more drawbacks such as server downtime, inability to check backup for consistency, inefficient compression, inability to restore a SQL database backup into a Native database server and vice-versa.



Client Control / Client Manager

ExpandIT Client Control and **Client Manager** enable organizations to gain the most out of the number of Microsoft Dynamics NAV sessions available to them and improve security.

From time to time, users leave their workplace without logging off Navision. This increases the possibility of a security breach by exposing confidential information to unauthorized persons and needlessly ties up Navision sessions.

Ghost Navision sessions may be left open if connection is lost when logging in via Terminal Server. Also, if a computer locks up and reboot is required, it may lock up a Navision session.

Client Control is the perfect solution:

- Automatic log off when idle
- Logoff at end of day
- CPU Monitoring to allow long reports to run
- Client-side installation
- Easy configuration
- Increased security
- Increased availability of Navision sessions
- Administrator controls time-out

Client Manager includes the Client Control and gives the system administrator greater ability to centrally manage Navision clients across a network using an administrative dashboard.

Key Features:

- List running clients
 - Notify Navision users
 - Terminate user sessions
 - Show process information for sessions
 - 99 group option sets
 - IP-port configuration
 - Limit number of sessions per user or group
 - Terminate "most" idle session
 - Guaranteed session availability
- Editions:** Control Only, Standard, Enterprise

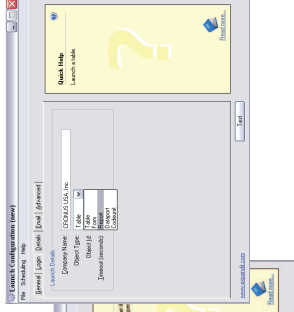
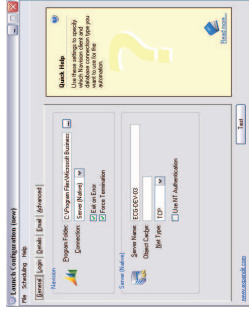
Launch Utility

ExpandIT Launch Utility enables scheduled and automated jobs in Navision. These jobs could be periodic reports or statistics, import or export of data (Dataport), or execution of stepwise operations (Codeunit).

Works even after a server restart

Once in a while, a server restart is necessary and then it is important that the system remembers all scheduled jobs including all Navision jobs and starts and stops them in the correct order.

ExpandIT Launch Utility uses Windows Scheduled Tasks allowing it to schedule Navision jobs linked with scheduled jobs in other business critical systems.



Launch Utility vs. NAV 5.0 Job Queue

1. Ease of use: Launch Utility does not require NAS.
2. Stability: Each task run by Launch Utility runs in an isolated process. With Job Queue all jobs share the process and errors may affect multiple jobs.
3. Scheduling flexibility: Launch Utility uses Windows Scheduler, which has a lot more scheduling options.
4. In Launch Utility you can debug a job by watching it run.
5. Launch Utility has better error reporting in the event log and can send an email or SMS to administrators.
6. Launch Utility works on all versions of NAV.
7. Launch Utility can also run dataports and forms directly.
8. Launch Utility can terminate a process if it runs longer than specified.
9. Launch Utility supports the use of specific .zip files and can run in the context of a Windows user. Job Queue runs only as a service. This can affect printing and e-mailing.
10. Launch Utility can run other programs depending on the success or error status of the running job.

EXPANDIT solutions

- Launch a program or task depending on success or failure
- Compress backup file by 80%
- File name macros
- Consistency check of backup file
- Automated Restore
- Restore check

Editions: Standard, Professional, Enterprise

Key Features:

- Automated & Scheduled backup
- Consistency check of live database
- No server downtime
- Send status report
- Generate event log file
- Version independent
- Native/SQL server
- Support for NAV 5.0 and Windows Vista
- Create backup of selected companies or entire database.
- Backup is only the size of the data in the database.
- Report to Windows Event Log